

POLDIP3 Polyclonal Antibody
Catalog # AP71992**Specification**

POLDIP3 Polyclonal Antibody - Product Information

Application	WB, IHC-P
Primary Accession	Q9BY77
Reactivity	Human
Host	Rabbit
Clonality	Polyclonal

POLDIP3 Polyclonal Antibody - Additional Information**Gene ID** 84271**Other Names**

POLDIP3; KIAA1649; PDIP46; Polymerase delta-interacting protein 3; 46 kDa DNA polymerase delta interaction protein; p46; S6K1 Aly/REF-like target; SKAR

Dilution

WB~~Western Blot: 1/500 - 1/2000. Immunohistochemistry: 1/100 - 1/300. ELISA: 1/40000. Not yet tested in other applications.

IHC-P~~N/A

Format

Liquid in PBS containing 50% glycerol, 0.5% BSA and 0.09% (W/V) sodium azide.

Storage Conditions

-20°C

POLDIP3 Polyclonal Antibody - Protein Information**Name** POLDIP3**Synonyms** KIAA1649, PDIP46**Function**

Is involved in regulation of translation. Is preferentially associated with CBC-bound spliced mRNA-protein complexes during the pioneer round of mRNA translation. Contributes to enhanced translational efficiency of spliced over nonspliced mRNAs. Recruits activated ribosomal protein S6 kinase beta-1 I/RPS6KB1 to newly synthesized mRNA. Involved in nuclear mRNA export; probably mediated by association with the TREX complex.

Cellular Location

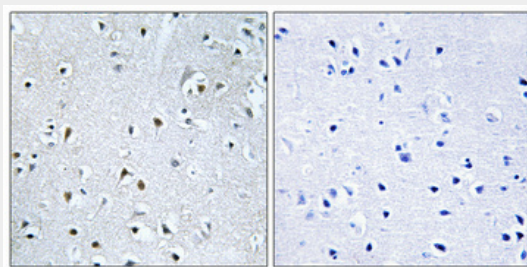
Nucleus. Nucleus speckle. Cytoplasm. Note=Nucleocytoplasmic shuttling protein

POLDIP3 Polyclonal Antibody - Protocols

Provided below are standard protocols that you may find useful for product applications.

- [Western Blot](#)
- [Blocking Peptides](#)
- [Dot Blot](#)
- [Immunohistochemistry](#)
- [Immunofluorescence](#)
- [Immunoprecipitation](#)
- [Flow Cytometry](#)
- [Cell Culture](#)

POLDIP3 Polyclonal Antibody - Images



POLDIP3 Polyclonal Antibody - Background

Is involved in regulation of translation. Is preferentially associated with CBC-bound spliced mRNA-protein complexes during the pioneer round of mRNA translation. Contributes to enhanced translational efficiency of spliced over nonspliced mRNAs. Recruits activated ribosomal protein S6 kinase beta-1 I/RPS6KB1 to newly synthesized mRNA. Involved in nuclear mRNA export; probably mediated by association with the TREX complex.